



恆 | 美 | 盛 | 世

IMMORTALIZED SPLENDOURS

MY富貴 NIRVANA | [MyNirvana.info](https://www.MyNirvana.info) | www.MyNirvana.info | +60122123273

富貴山莊 (巴生) | 百年歸根 · 永恆完美之淨土
Nirvana Memorial Park (Klang) | The Eternal Pure Land



風水之優

金獅探水 霸氣延綿萬代興

有別於巴生其它地方的黑色土質，佔地面積220英畝的富貴山莊（巴生）擁有祥和的紅、黃兩色土質，在風水學上認為，紅土及黃土為發富發貴之土壤。

而從風水巒頭的形法上看，山勢如龍、虎、獅、象及龜皆是吉穴：細看富貴山莊（巴生）的整體格局，如同一頭獅子，頭往內、前腳伏地、低著頭在探前方之水，坐西向東，故“喝形”為“金獅探水”。俯地之獅既緩和了凶悍，卻又不失威武之霸氣，得水後更是元氣提振，乃上上之局。

正所謂“山管人丁、水管財祿”，富貴山莊（巴生）的周圍山勢和緩，並且前方見水，乃旺財旺丁之局，加上穴場後有靠山、左右又得龍虎山脈護持，符合風水吉祥安穩的條件。

至於富貴山莊（巴生）的福地，整體格局以卯（東）、酉（西）、寅、丑（東北）及辰（東南）旺向為主，可配合不同仙命日主來擇吉穴，不僅可延年益壽也能福澤子孫，一舉多得。

Superb Feng Shui to Usher Prosperity for Posterity

The auspicious mix of red and yellow earth of the 220-acre Nirvana Memorial Park (Klang) is distinguishable from the characteristic black soil of other parts of Klang. In the study of Feng Shui, red and yellow earth are deemed rich and precious.

In Feng Shui context, the mountains take on the forms of dragons, tigers, lions, elephants and tortoises. By studying the landscape of Nirvana Memorial Park (Klang) closely, it resembles a lion looking inward with its forefeet on the ground; its head bowed to explore the water, sitting west to east, hence the “drinking form” giving rise to the “golden lion exploring the water” formation. Although the recumbent form softens its fierceness, the lion doesn't lose its mighty dominance. It recovers its vitality after drinking the water, which is beneficial.

As the saying goes, “mountains govern people, water governs financial wealth”, the surrounding mountains of Nirvana Memorial Park (Klang) are gentle with the presence of water at the front which promotes wealth and prosperity. Additionally, the Meridian Spot is supported from the back and protected by the Green Dragon and White Tiger mountains on both sides. Supported by these features, the conditions for auspicious and stable Feng Shui are met.

Overall, the overall land pattern of Nirvana Memorial Park (Klang) is characterized by the flourishing direction of Mao (East), You (West), Yin, Chou (Northeast) and Chen (Southeast). It is possible for different individuals to choose an auspicious spot to not only promote longevity but to also benefit generations of descendants.





舍利佛塔

繁花意境中的鎮地寶塔

The Stupa - A Sacred Place with Added Blessing

大放光明的舍利佛塔，屹立在富貴山莊（巴生）的正中，照護著一切眾生，震懾十方。

佛經中記載，凡舍利佛塔所在之地，將可聚集諸佛的守護加持，得祥瑞之氣令土地富饒，利益所有眾生。

An awe-inspiring stupa is erected in the middle of Nirvana Memorial Park (Klang) to protect all the sentient beings.

In Buddhism, a Buddhist stupa serves as a marker for a sacred space. It gathers all the divine blessings to add auspiciousness to its surroundings to lift the spirits of all sentient beings.



家族陵園

落葉歸根 延續中華文化之傳統

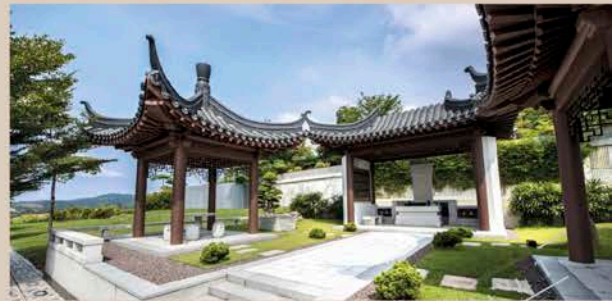
Royal Family Burial Plot - A Place to Call Home

落葉，會歸根。在華人傳統思想中，不論人在哪裡、不論人居何處，家總是最溫暖的避風港。無論我們走得多遠、無論身在何方，遊子之心總期盼著倦鳥歸巢，盼望尋覓一個終身安定的歸宿，等待與家人團聚的日子。

家族陵園延續著中華民族“團圓”的文化傳統，除了有落葉歸根的想法之外，也為家族後裔提供一個永久的追思空間，寄托後代子孫對往生親人的無盡思念。

The falling leaves, fall close to the roots of the tree. In Chinese traditional thought, a place called home prevails against anything. Regardless of where you are, you still find the comfort and warmth of home that reminds you of your roots, from the depths of your heart. A home is the best shelter, spiritually. No matter how far you go and wherever you are, there is always a time, you and your family, settle down in a place truly called home.

This is where family burial plot comes into picture. The thought of ‘back-to-the-roots’ takes a strong stand. It is designed to mark the journey home for the departed while infusing the future generations with pleasant recollections of their departed loved ones.



家族福地

傳世珍藏 銘刻舉世非凡之記憶

Family Burial Plot
Fine Craftsmanship alongside Eminent Glory

風格迥異的個性化墓型，可將生命雋美的詩篇，一幀幀製作成永恆的設計，依先人的喜好、個性與特色，用藝術完美地典藏先人的生命故事，化作為稀世珍品，成為在人間淨土留下的重彩一筆，屬於往生者獨一無二的“藝術宮殿”。

Every personalized design connotes a different story worth being immortalized. It is likened to a beautiful poem bearing an eternal magnificence. Here, you are greeted with fond memories revolving around the hobbies, personalities and characteristics of your loved ones. Through the beauty of art, the cherished glory of your loved ones comes alive instantly in this highly treasured Pure Land.



雙/單穴福地

一景一墓 凝練天人和諧

Double And Single Plot - Man and Nature in Perfect Harmony

井然有序的富貴山莊（巴生），每一個福澤穴地皆格局精心，設有雙穴和單穴福地，故人得以沐浴安逸之中，藉以福蔭子孫，順及家運，興及人丁。同時，山莊擁有完善墓園管理系統，先進的各項設施，廣闊的柏油路及無數的泊車位，方便後人進行拜祭活動。



The single and double burial plots at Nirvana Memorial Park (Klang) are well-organized, so that departed loved ones who find rest here can be at peace - blessing their descendants with fortune and prosperity. At the same time, the memorial park has a comprehensive maintenance system, state-of-the-art facilities, extensive paved roads and numerous parking bays for the convenience of future generations to come pay homage.

天國意境

一座專屬基督徒的安息樂園

Christian Memorial Park
An Eternal Resting Place in Heaven's Embrace



以天國的意境作為設計，讓基督徒可以永息在主的聖恩之下，基督徒墓園區，規劃井然，福地選擇多樣化，包括家族福地、雙穴福地及單穴福地，而客戶也可自行選擇墓碑設計，加上視野寬闊，清幽寧靜，景色怡人，為基督徒永恆追思的安息福地。

Inspired by the idea of the 'Kingdom of Heaven', the Christian Memorial Park is a dignified yet graceful eternal resting place for Christians. It is laid out in an orderly manner consisting of varied burial plots. For burial, Christian Memorial Park offers single plots, double plots and family plots. For cremation, the columbarium houses a number of elegantly designed niches to choose from. The good news is that customers are given the option to choose their preferred headstone designs. Sitting atop a hill, a breath-taking vista opens up before you. The memorial park is harmonised with pleasant scenery in a tranquil environment, hence befitting an ideal final resting place for the Christians.

基督徒墓園



MY富貴 NIVANA

MyNirvana.info

www.MyNirvana.info

+60122123273



三聖宮大殿

恢弘莊重的祈福之境

The Temple of the Three Saints
A Magnificent & Solemn Realm of Blessings

Come to Nirvana Memorial Park (Klang) to pay homage and remember loved ones, get close to nature, to admire the lush scenery and to contemplate in a prayer for peace at the modern and elegant Temple of the Three Saints.

The main sanctuary of the Temple of the Three Saints consists of two floors; the upper level is the main ceremonial hall, while the lower level is the columbarium. The Temple of the Three Saints is modeled after traditional Tang dynasty architecture with its distinctive roof tiles and wall design radiating a strong Chinese charm.

The interior of the Temple of Three Saints however is another realm that combines modern and traditional oriental styles to create a virtually limitless space that integrates nature, art and elegance. Natural sunlight is utilized to create a bright and airy atmosphere – conveying a space that is both peaceful and beautiful.



前來富貴山莊（巴生）感恩憶祖，可親近大自然，一覽蔥蔥郁郁的風景，還可留步現代典雅的三聖宮大殿，祈福平安。

三聖宮大殿設有兩層樓，上層為三聖殿，下層則是骨灰殿。唐代風格設計，讓三聖宮大殿外觀看起來氣魄雄偉，鮮明的屋瓦和牆面設計，煥發出濃濃的中式韻味。

三聖宮大殿內堂則另有一番新天地，結合現代與東方風格，打造出集自然、藝術、雅緻為一體的無限包容空間。從外採納自然陽光營造明亮通風的氛圍，讓空間凸顯得更加靜謐而美好。

A Gathering of Innumerable Buddhas Blessing the World



The main entrance consists of a festoon gate decorated by lotus buds that is exquisite and unique – framing the most wondrous view of the hall within. The temple enshrines the Three Saints of the Western Pure Land, the Bodhisattva Ksitigarbha and the guardian deity Da Bo Gong; vowing to rescue all sentient beings with their infinite willingness and infinite light.

The Three Saints are trimmed with golden elements to create a three-dimensional effect and the unique and life like images a new realm of artistry. The background of Three Saints is layered in the form of

traditional roofs that reinforce the notion of “home”. The wooden lattices are gilded in rose gold; creating a soft and calming atmosphere that relaxes the soul.

The central dome of the main ceremonial hall is composed like a lotus blossom which symbolizes purity, rebirth and endlessness. The 810 lotus petals are presided over by the Buddha Amitabha; forming a mass gathering of innumerable Buddhas. The central dome of the main ceremonial hall is lit with full colour progressive lighting to create a spectacular view of innumerable Buddhas in vigil blessing the world.

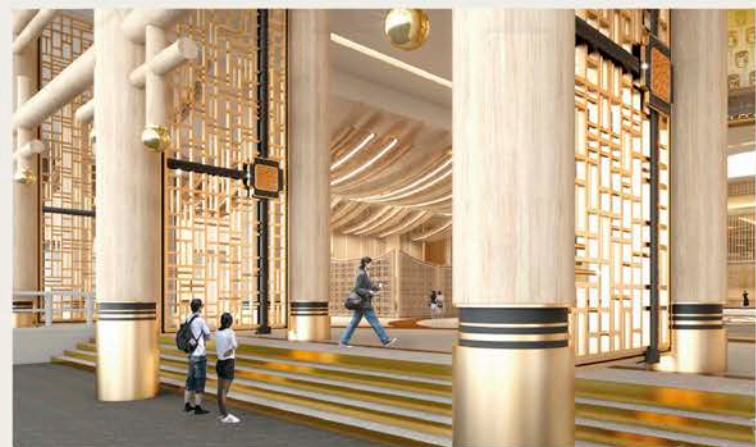
萬佛供聚

眷顧大千世界

— 聖宮大殿正中大門設有蓮花苞造型的垂花門，精緻獨特形成大殿最美的
— 一道風景線。殿內供奉西方三聖、地藏王菩薩及福德正神大伯公，以無盡願力營渡一切衆生，光明無量。

西方三聖運用全白金邊元素塑造立體感，栩栩如生的獨特雕像開創出新的藝術境界。三聖背景以屋瓦層層疊放構造出家的完整，左右兩側牆面以玫瑰金面打造，營造柔和與心靜，讓人心靈放鬆的氛圍。

大殿中央穹頂以象徵純正、重生及永恆的“蓮花”組成，810盞蓮花瓣經過阿彌陀佛加持，構成萬佛供聚的無量法，搭配全彩漸變先進照明營造浩瀚星雲的壯觀景象，彷彿殊勝萬佛守護著大千世界。



骨灰殿

專屬家的永恆國度

The Columbarium
An Eternal Home Beyond Comparison

有瓦遮頭便是家。人們在瓦的守護下，才有了一個完整家庭的模樣。骨灰殿以“家”為概念，建築風格以現代東方設計為主，讓人感覺愜意自在，就好像一個家一樣。

美麗の木質用色，創造出無以倫比的自然美，再利用現代裝飾如家具和地毯的明亮色彩，為骨灰殿注入新的生命，讓空間告别生硬乏味的格調。

水元素設計游走在空間的每一處角落，將各區域巧妙銜接。大殿與骨灰閣中央置放白色水晶蓮花池，流水順著蓮花緩緩而下，象徵生命的生生不息。

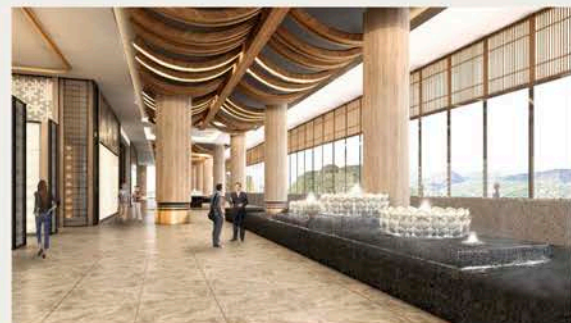
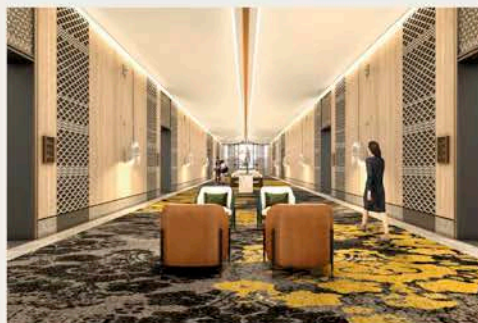
Home is where there's a roof to shelter one's head. When there is a roof to shelter one's head, only then does it have a complete appearance of a home. The columbarium is based on the concept of "home", and the architectural style is mainly a modern oriental design that makes one feel comfortable and at ease, just like a home.

The natural colours of wood create beauty beyond comparison, and the bright colours of modern décor such as furniture and carpets are used to inject life into the columbarium suites as well as to avoid boring conventional styles.

The use of water elements to link various areas is ingenious. The white crystal lotus pond is placed in the central hall and columbarium with the flowing water descending gently from the lotus fountain – symbolizing the cycle of life.



MY富貴 NIRVANA | MyNirvana.info | www.MyNirvana.info | 60122123273



骨灰殿

水鄉前的顯貴之居 續寫生前榮光

—— 座安放思念的樓宇，景緻唯美的骨灰殿堂前，
迷人的水鄉風光在給予故人精心的祝福。

藍天白雲照映，骨灰殿堂前水波蕩漾，殿堂的牆上可見身份與地位象徵的“馬頭牆”建築設計，為造就出屬於故人中意的顯貴之居，讓故人續寫生前的榮光，享有永恆的風光。



Magnificent Columbarium of Distinctive Eminence

This is an awe-inspiring columbarium that invokes the fond remembrance of your loved ones. Elegant and classy, it sets in motion a feel-good atmosphere to seek the divine blessings for your loved ones in a charming setting inspired by nature.

The vibrant water waves are further harmonized with blue sky and white clouds. Outside the columbarium, there are the distinctive horse-head gable designs to tell the proud stories of the departed, which are destined for eternity.



永久信托管理

富貴集團擁有高達馬幣1億雄厚永久信托基金，確保山莊長期維修，意即在富貴山莊（巴生）購買福地，只需一次過繳付這永久管理費。由此永久信托基金獲取的利息，將用作山莊的維修費用，包括道路、園藝及設施維修。

A maintenance trust fund of RM100 million is maintained by Nirvana Asia Group to ensure continuous maintenance and upkeep of their memorial parks. It only requires a one-off maintenance fee upon the purchase of any our plot packages. The interest returns from the maintenance trust fund will be used for the maintenance of roads, landscaping and facilities.



精心維護 管理服務現代化

Maintenance Trust Fund for Continuous Maintenance and Upkeep



富貴山莊 (巴生)

Nirvana Memorial Park (Klang)



距離巴生市中心 & SETIA ALAM 僅咫尺之遙

富貴山莊 (巴生) 處於優越的位置，距離巴生市中心及 SETIA ALAM 僅咫尺之遙，加上交通四通八達，非常便捷，方便民衆前往山莊拜祭先人。

Only a stone's throw from Klang town centre and SETIA ALAM

Nirvana Memorial Park (Klang) is located at a strategic location only a stone's throw from Klang town centre and SETIA ALAM. Conveniently connected in terms of transport, it is easy for visitors to come to the memorial park to pay respects to their loved ones.

四通八達

位置優越 交通便利

Strategic Location for Added Convenience

MY富貴 NIRVANA | [f MyNirvana.info](#) | [www.MyNirvana.info](#) | *60122123273



MY富貴 NIRVANA

 MyNirvana.info

www.MyNirvana.info

+60122123273

NIRVANA MEMORIAL PARK (KLANG) BERHAD (1129267-M)
KLG-00002/2021

Nirvana Klang Sales Gallery

No. 2662 - 2666, Persiaran Tengku Ampuan Rahimah, Off Jalan Langat,
41200 Klang, Selangor.

本文件所包含的所有信息（包括任何說明、規格和插圖）均可在本公司、其顧問、工程師、建築師和 / 或有關當局的要求並且不預先另行通知下，被修改、變動和更改。本文件不擬向亦不能構成要約或合約的一部分。所有視覺效果、影像、圖樣、平面圖和插圖均為畫家構想圖，僅供說明性參考，不可作為任何法律依據。儘管本公司在提供此信息已採取合理謹慎的措施，惟本公司對任何的信息變動或不准確性皆一概不負責。本公司或其代理一概毋須對任何人士因依賴此內容而採取的任何行動承擔責任。准購買者應在採取任何行動前，自行查閱各方面的相關信息，以滿足自身的要求。

All information contained herein (including statements, specifications and illustrations) are subject to amendments, variations and modifications without prior notification, as may be required by the Company, its consultant, engineer, architect and/or the relevant authorities, and is not intended to form and cannot form part of an offer or contract. All visuals, images, pictures, plans and illustrations are artist's impressions and for illustrative purposes only. Whilst every reasonable care has been taken in providing this information, the Company cannot be held liable for any variation or inaccuracy. No responsibility is accepted by the Company nor its agent for any action taken in reliance thereon. Before acting on any information, prospective purchasers should make their own enquiries to satisfy themselves on all aspects.

* All images are reference only / 所有圖片僅供參考 *

* For full details of the terms and conditions, please refer to the respective purchase orders.